
TAPLOW
RIVERSIDE
BUCKINGHAMSHIRE

Jubilee Gardens
5 BEDROOM
Detached Houses

No. 78



Computer generated image of No. 79, indicative only

Berkeley
Designed for life

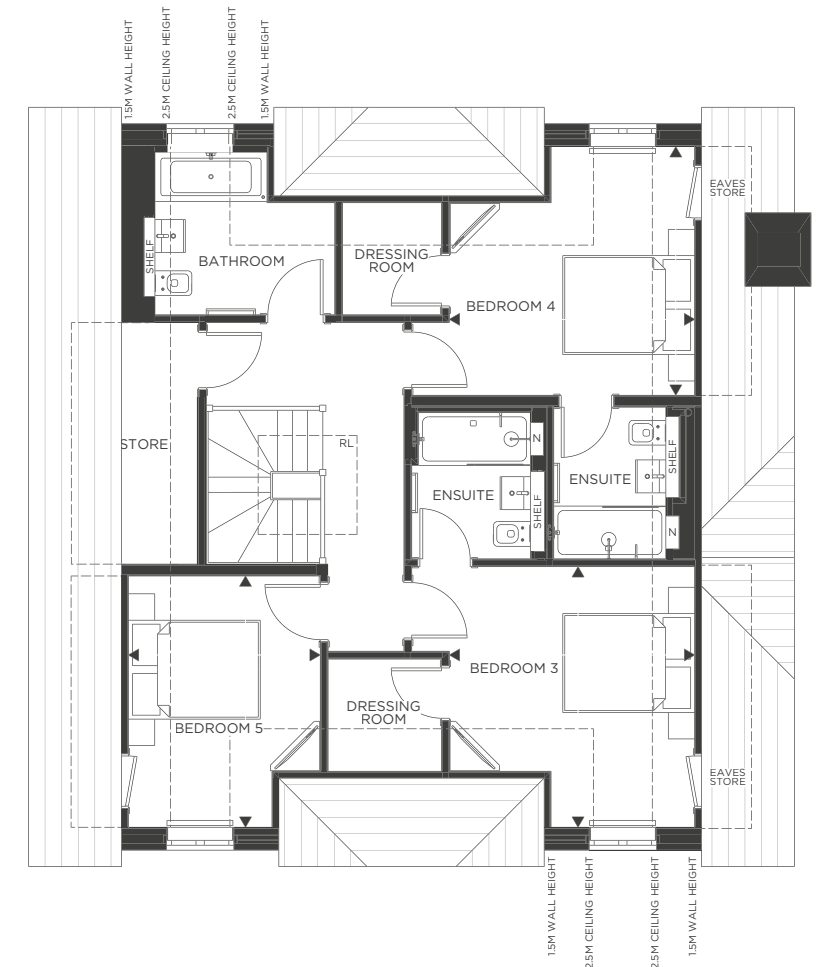
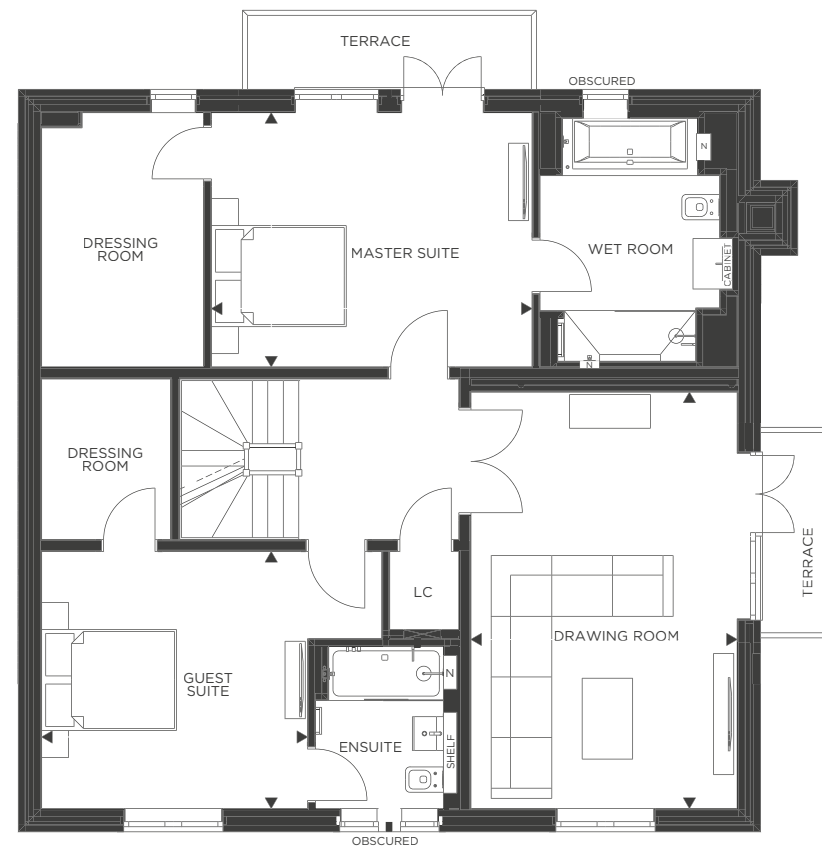
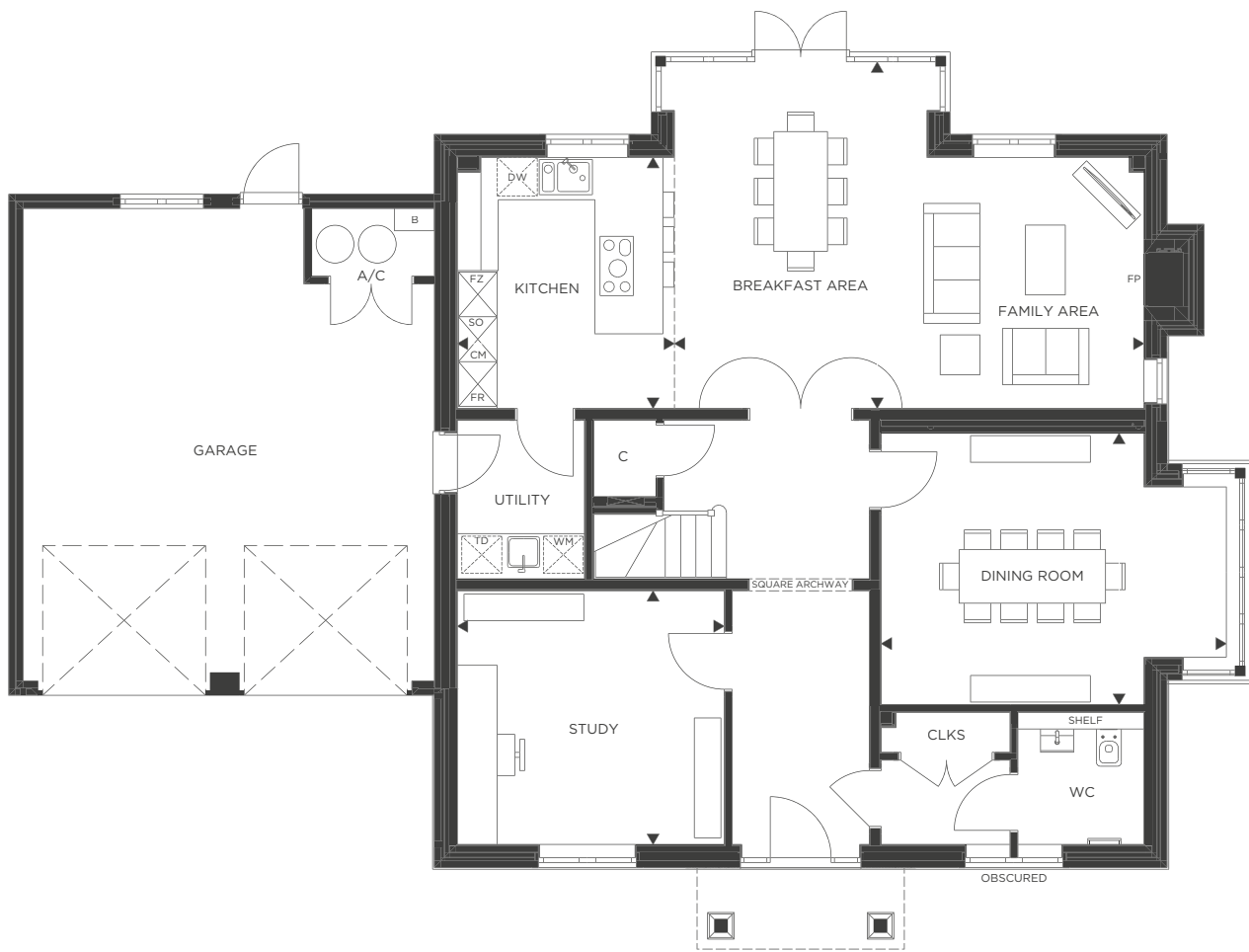
JUBILEE *Gardens*

No. 78

*Exceptional detached five bedroom houses with private gardens
in the heart of Taplow Riverside.*

*These exquisitely-finished homes, are bordered by magnificent open
countryside and close to riverside walks along the
River Thames and Jubilee River.*





GROUND FLOOR

Family / Breakfast Area	7.05m x 5.20m [†]	23'2" x 17'1"†
Kitchen	3.26m x 3.77m	10'8" x 12'4"
Study	4.01m [†] x 3.81m	13'2"† x 12'6"
Dining Room	5.18m [†] x 4.07m	17'0"† x 13'4"

†Maximum measurement

FEATURES

- Spacious study/multi-purpose room
- Formal dining room with feature bay window
- Double doors open into a bright spacious kitchen / family / breakfast area, leading into the garden
- Adjoining double garage with electric doors

FIRST FLOOR

Master Suite	4.75m x 3.77m	15'7" x 12'4"
Guest Suite	3.94m x 3.81m	12'11" x 12'6"
Drawing Room	3.95m x 6.17m	13'0" x 20'3"

FEATURES

- Master suite with ensuite walk-in wet room, dressing room and terrace overlooking the garden
- Guest suite with ensuite and dressing room
- Drawing room with terrace featuring views of country park

SECOND FLOOR

Bedroom 3	3.72m x 3.95m [†]	12'2" x 13'0"†
Bedroom 4	3.72m x 3.77m [†]	12'2" x 12'4"†
Bedroom 5	2.91m [†] x 3.81m [†]	9'7"† x 12'6"†

†Maximum measurement

FEATURES

- Feature roof light over landing and stairwell
- Bedroom 3 with ensuite and dressing room
- Bedroom 4 with ensuite and dressing room
- Bedroom 5 with access to family bathroom

Bi-fold doors	FZ Freezer	LC Linen Cupboard	U Utility	WM Space and plumbing for Washing Machine	FP Class one flue and gas feed provided	---- Change in ceiling height
Bulkhead to kitchen - reduced ceiling height	SO Single Oven	A/C Airing Cupboard	MPR Multi-Purpose Room	DW Dishwasher	B Boiler	
FR Fridge	CM Combination Microwave	RL Roof Light	TD Space for Tumble Dryer		◀▶ Measurement points	Radiators
	C Cupboard					

Floorplans shown for Taplow Riverside are for approximate measurements only. Exact layouts and sizes may vary. All measurements may vary within a tolerance of 5%. The dimensions are not intended to be used for carpet sizes, appliance sizes or items of furniture. Furniture layouts are indicative only. Kitchen layout indicative only. Electrical positions shown are indicative only. Please ask Sales Consultant for further information. Site plan (including marketing names) is indicative only and subject to change.



Showhome photography at Jubilee Meadows



Computer Generated Image of Jubilee Meadows, Taplow Riverside, indicative only



Showhome photography at Jubilee Meadows



Nearby views of River Thames

Quality Specification - A Berkeley Hallmark

KITCHEN

- Handcrafted kitchen manufactured by British furniture company Charles Yorke
- Custom designed in frame kitchen with composite stone worktop & matching upstand
- Blanco stainless steel 1.5 bowl under-mounted sink
- Blanco polished chrome mixer
- Integrated pull-out waste bin
- Recessed LED downlights throughout with feature lighting to peninsula
- Porcelain floor tiles
- Integrated appliances throughout including:
 - Siemens multifunction single oven with microwave function
 - Siemens multifunction single oven
 - Siemens integrated multifunction dishwasher
 - Siemens induction hob 5-zone with 1 dual / extendable zone
 - Siemens fully integrated tall fridge
 - Siemens fully integrated tall freezer
 - Falmec extractor hood to suit design

UTILITY ROOM

- Laminate work surface
- Space and plumbing for free-standing washing machine & tumble dryer
- Porcelain floor tiles

MASTER ENSUITE A LUXURIOUS WET ROOM

- Large format polished porcelain feature shower wall
- Large format polished / matt porcelain tiling to remainder
- Recessed tiled niche within shower area with IP Rated LED downlight
- Recessed tiled niche with mirror, IP Rated LED downlight and glass shelving over bath
- IP Rated LED downlights fitted throughout
- Bespoke lacquered single drawer vanity unit with stone countertop
- Mirrored cabinet positioned over vanity (LED strip surround, glass shelving, shaver socket & concealed lighting internally)
- Undermount Villeroy & Boch basin
- Wall hung Villeroy & Boch pan with glass dual flush
- Villeroy & Boch double ended Quaryl bath with integrated overflow filler
- Walk-in wet room with matt mosaic shower area and glass shower wall
- Polished stainless steel heated towel rail
- Crosswater brassware in polished chrome finish including:
 - Concealed wall mounted basin mixer
 - Wall mounted shower head
 - Thermostatic mixer to shower / bath
 - Complete hand-shower set

GUEST ENSUITE / BATHROOM

- Large format matt porcelain floor tiles
- Large format matt porcelain wall tiles to selected areas
- Recessed tiled niche within shower area (where applicable)
- IP Rated LED downlights fitted throughout
- Keuco single drawer vanity unit with cast mineral basin & polished chrome deck-mounted basin mixer
- Recessed mirror with LED marker lights & separate shaver socket positioned over vanity unit
- Wall hung Villeroy & Boch pan with glass dual flush
- Villeroy & Boch double ended acrylic bath with tiled bath panel fitted to bathroom
- Merlyn stone resin shower tray with glass shower enclosure
- Polished chrome heated towel rail
- Crosswater brassware in polished chrome finish including:
 - Wall mounted shower head (where applicable)
 - Overflow filler, thermostatic mixer / diverter & hand-shower set to bath (where applicable)
 - Thermostatic mixer / diverter & hand-shower set to showers (where applicable)

CLOAKROOM

- Matt porcelain tiled floor & selected walls
- LED downlights fitted throughout
- Wall hung Villeroy & Boch pan with glass dual flush
- Polished stainless steel heated towel rail
- Keuco single drawer vanity unit in white glass with cast mineral basin & polished chrome deck-mounted basin mixer and free flowing waste
- Mirror fitted above basin

ELECTRICAL FITTINGS AND HOME ENTERTAINMENT

- Sky+ / Satellite to Family Area, Drawing Room, Master & Guest Bedrooms
- Data points to Family Area, Drawing Room, Master & Guest Bedrooms
- Telephone points to Family Area, Drawing Room, Master & Guest Bedrooms
- Ceiling speakers to Kitchen / Dining / Family Area, Drawing Room, Master Suite & Master Ensuite
- Feature LED lighting to Kitchen & Master Ensuite
- Pendant lighting to Drawing Room & Guest Bedrooms
- 5-Amp lighting circuits to Drawing Room, Master Ensuite & Guest Bedrooms
- Automatic lighting to cupboards
- Recessed LED downlights throughout the following areas:
 - Kitchen / Dining / Family Area
 - Drawing Room
 - Laundry Cupboard
 - Bathrooms
 - Hallway & Landings

- External power & light (where applicable)
- Sockets outlets & USB within Kitchen in polished chrome
- White metal sockets & switches throughout with slimline white plastic fittings to cupboards

JOINERY / IRONMONGERY

- Timber entrance doors with multi-point locking system, door viewer, handle & night latch in polished chrome
- Two panel satin painted internal doors with polished chrome door furniture
- Feature glazed doors to Kitchen Area & Drawing Room with polished chrome door furniture
- Satin painted skirting & architraves to match internal doors
- Stair detail (Staircase to feature painted balusters, string, apron, newel posts & bottom riser. Oak to Newel caps, base rail, handrail & bottom tread, remaining stair to be carpet)

INTERIOR FINISHES

- Decorative cornice to feature throughout Reception Rooms, Hallways & Landings
- Interior fittings to cupboards to suit situation
- Bespoke fitted wardrobes with lacquered doors to Master Suite with internal fittings to include single hanging, double hanging, drawers and shelves
- Wardrobes within remaining bedrooms will feature internal doors with shelf & hanging rail
- Wood effect porcelain tiling laid to hallway on ground floor
- Carpet floor finishes to remainder of property

HEATING / COOLING

- Gas fired central heating & hot water system
- Underfloor heating to ground & first floor
- Radiators to second floor where appropriate

SECURITY

- Property will include an intruder alarm with wireless panic button
- Smoke detectors & heat detectors hardwired with battery back-up
- Multi-point locking
- Hardwired doorbell

PEACE OF MIND

- 10-Year Premier Guarantee

EXTERNAL FEATURES

- Class one flue provision and gas supply (where applicable)
- Landscape to the front and turf to the rear
- External tap to the rear of the property
- Patio area to rear
- Garage doors operated electrically

For more information about Taplow Riverside, please visit our website or contact our Sales Team:

www.taplowriverside.co.uk
taplowriverside@berkeleygroup.co.uk
01628 879342

Open daily 10am-5pm
Thursday 10am-7pm

Taplow Riverside Information Centre, Mill Lane,
Taplow, Berkshire
Sat Nav Reference: SL6 0AA