



190 STRAND

LONDON WC2

PLOT 5-6-1



Computer generated images are indicative only

190 Strand is a luxurious new development of apartments, townhouses and penthouses in an area of central London internationally acknowledged as the Capital's theatre, nightlife, shopping and cultural heartland, with international embassies, law courts and the River Thames close by. Exclusive residents' facilities include a 24 hour hotel-style concierge, on-site business suite, private cinema, gymnasium and swimming pool.



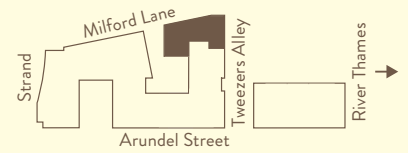
St Edward
Designed for life

PLOT 5-6-1

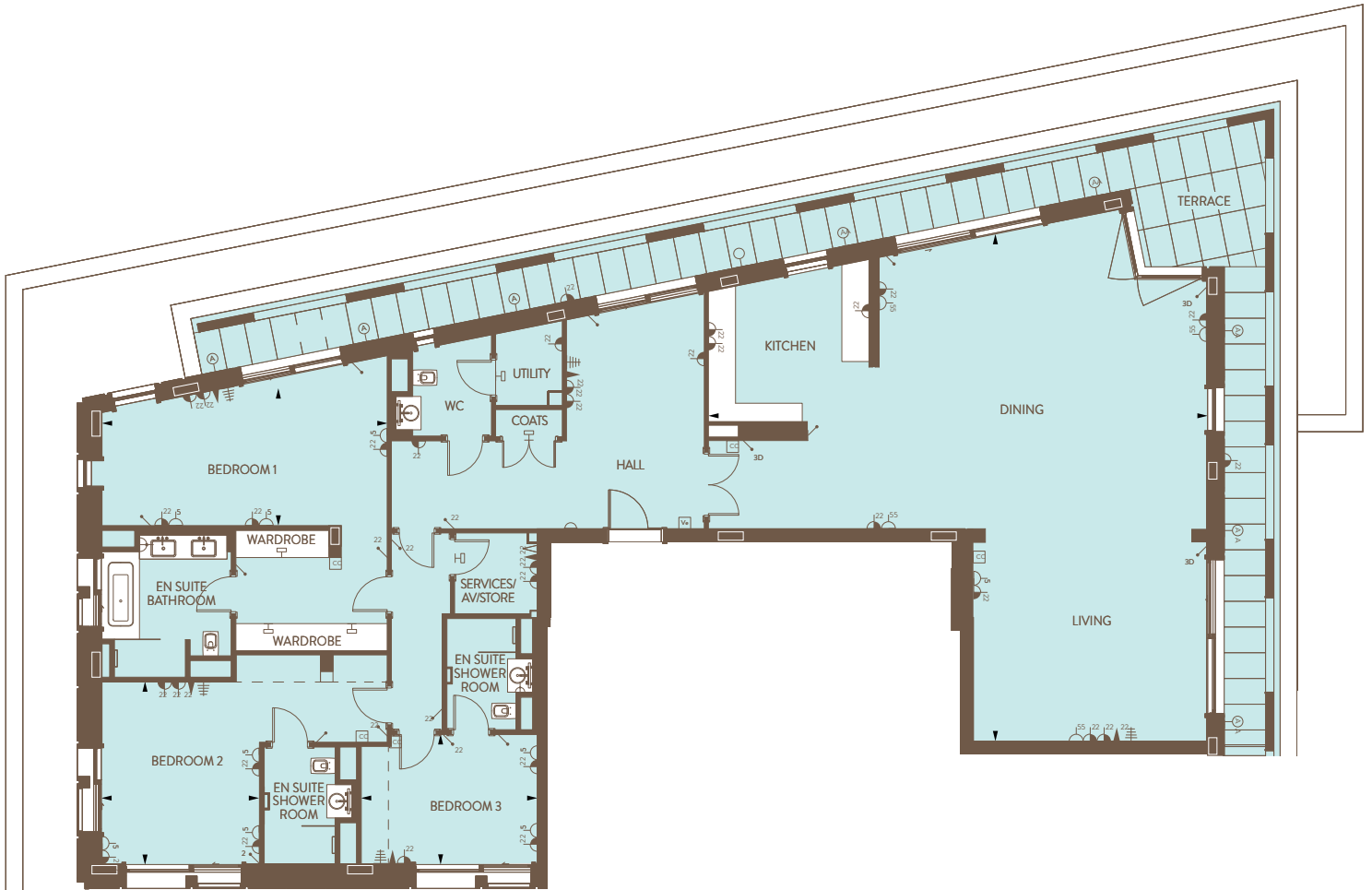
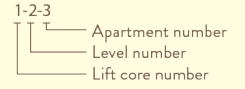
3 BEDROOM

MILFORD HOUSE

Living/Dining/Kitchen	39' 2" x 37' 1"	11950mm x 11300mm
Bedroom 1	22' 5" x 10' 10"	6840mm x 3290mm
Bedroom 2	12' 6" x 14' 4"	3810mm x 4360mm
Bedroom 3	13' 10" x 10' 2"	4220mm x 3100mm
Total area	2723 sq ft	253 sq m



Sixth floor



◀ ▶ Depicts measurement points

Floorplans shown for 190 Strand are for approximate measurements only. Exact layout and sizes may vary. All measurements may vary within a tolerance of 5%. To increase legibility these plans have been sized to fit the page, therefore each plan may be at a different scale to others within this brochure.

Electrical key

- ✓ Single light controls
- ▭ Heated towel rail
- ⚡ Shaver outlet
- ⓐ Heating and cooling controller
- Ⓥ Video entry unit
- Ⓛ Single switched outlet
- Ⓜ Double switched outlet
- Ⓝ Telephone/data point
- Ⓣ TV/audio visual point
- Ⓢ Door bell sounder
- Ⓜ Master telephone point
- Ⓛ Balcony light
- Ⓜ Two-way light controls
- Ⓛ Pop-up double switched outlet
- Ⓛ Closet light
- Ⓛ Dimmer light controls
- Ⓛ 5 amp outlet

