

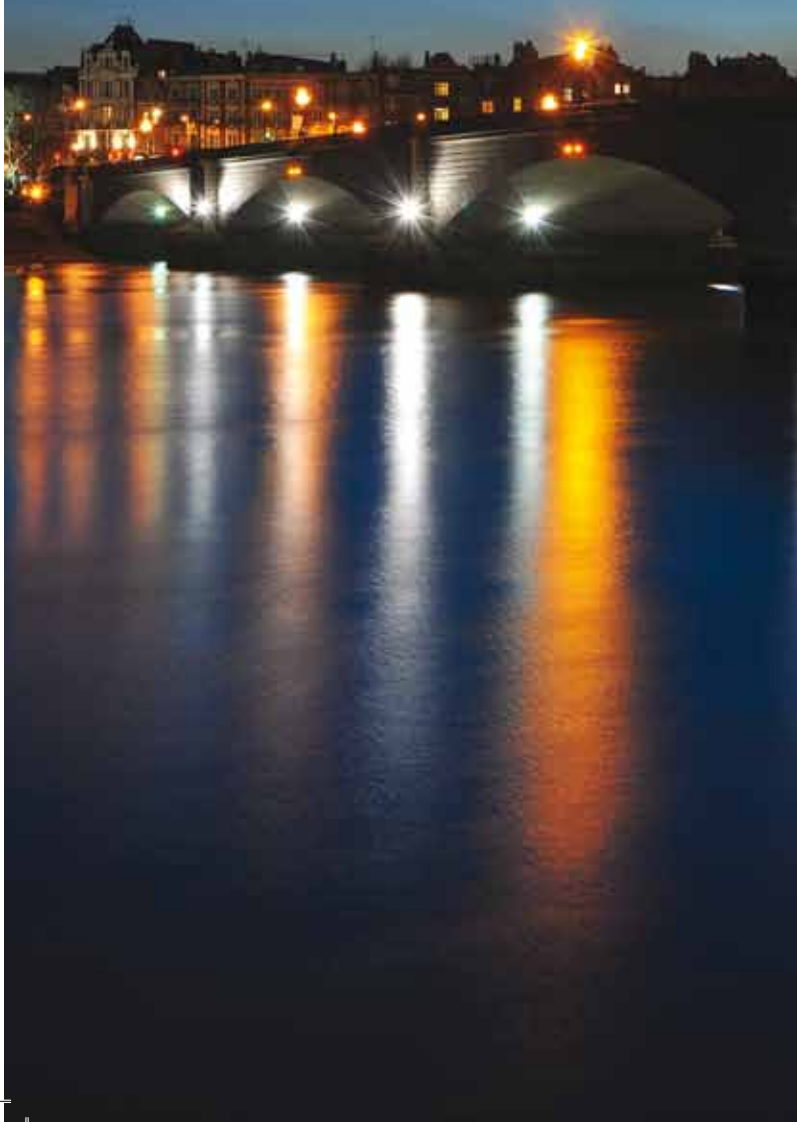
THE GUIDE

TO ENJOYING
LIFE IN SOUTH
WEST LONDON

St James

Designed for life

WELCOME



PUTNEY BRIDGE PUTNEY

Living in one of St James' superb developments in SW15 – Queen Mary's Place, Roehampton House or Emerald Square – places you in a truly exceptional location. Some of London's most idyllic urban villages are on the doorstep, from the tranquil duck-pond centred Barnes to the once royal residence that is now Richmond-upon-Thames, not forgetting Wimbledon, Putney and Fulham.

This guide is designed to give you a feel for life in this unique part of the City. In addition to the usual chains and high street staples, we've highlighted some of the best schools, shops and services in the area, but of course, it's not an exhaustive list. However, the sheer variety of amenities is sure to make life in Roehampton a pleasure.

Read on and discover a whole new world for you and your family.

EATING OUT / 04

TRAVEL / 10

SHOPPING / 14

ENTERTAINMENT AND LEISURE / 18

EDUCATION / 22

HEALTHCARE / 24



EVERY TASTE IS CATERED FOR, FROM FAMILIAR CHAINS TO MICHELIN RATED RESTAURANTS – NOT FORGETTING A SUPERB SELECTION OF PUBS AND A CHOICE OF COSMOPOLITAN CAFÉS.

ITALIAN

Ask

52 Station Rd,
Barnes, SW13 0LP

020 8878 9300
askitalian.co.uk

Simple, delicious ingredients are used across a full range of pastas, pizzas, meats and salads.

Strada

375 Lonsdale Rd,
Barnes SW13 9PY

020 8392 9216
strada.co.uk

Combines authentic Italian cooking with stunning views over the Thames from the terrace, in one of the best locations in Barnes.

Strada

147 Upper Richmond Rd,
Putney, SW15 2TX

020 8789 6996
strada.co.uk

This neighbourhood chain restaurant in Upper Richmond Road serves Strada's menu of authentic Italian dishes to the locals of Putney.

Carluccio's

Brewhouse Lane,
Putney Wharf, SW15 2JQ

020 8789 0591

This Italian café boasts a huge riverfront terrace for sunny days.

SPANISH

Destino Restaurant

141 Upper Richmond Road,
Putney, SW15 2TX

020 8789 4304
destinotapasrestaurant.co.uk

Vibrant contemporary restaurant serving a variety of Spanish and Mediterranean dishes.

La Mancha

32 Putney High St,
Putney, SW15 1SQ

020 8780 1022
lamancha.co.uk

A superb Spanish tapas bar and restaurant with a first class reputation.



CHINESE

Aromatize Oriental Kitchen

177a Wandsworth High St,
Wandsworth, SW18 4JE

020 8704 0123

A diverse range of dishes from across Northern Asia offering the best authentic, regional and classic dishes.

Bayee Village

24 High St, Wimbledon,
SW19 5DX

020 8947 3533
bayee.co.uk

Excellent Chinese cuisine in a stylish setting that has been attracting locals for over 40 years.

THAI

Awesome Thai

68 Church Road,
Barnes SW13 0DQ

020 8563 7027

Beautifully executed cooking is the hallmark of this new Thai restaurant, situated opposite the old Olympic Studios.

Thai Square

Putney Bridge,
2-4 Lower Richmond Road,
Putney, SW15 1LB

020 8780 1811

An inviting restaurant with gorgeous views over the Thames.

INDIAN

Indian Zilla

2-3 Rocks Lane,
Barnes SW13 0DB

020 8878 3989
indianzilla.co.uk

Bright and contemporary restaurant with attentive, friendly service; the modern menu features authentic, full-flavoured dishes with a lightness of touch.

Mango & Silk

Putney Bridge,
199 Upper Richmond Rd,
East Sheen SW14 8QT

020 8876 6220
mangoandsilk.com

Beautifully prepared favourites and exciting new specialties.



OTHER

Annie's

36-38 White Hart Lane,
Barnes SW13 0PZ

020 8878 2020

anniesrestaurant.co.uk

Locals love the quirky style, warmth of welcome and fabulous food in this brasserie-style institution.

The Butcher & Grill

505-507 Upper Richmond
Road West, Sheen, SW14 7DE

020 8944 8269

thebutcherandgrill.com

A unique combination of a modern butcher shop and an informal restaurant, serving all the produce from the shop.

The Bingham

61-63 Petersham Rd,
Richmond TW10 6UT

020 89400902

thebingham.co.uk

Exquisite and exciting modern British cuisine from one of London's most unusual boutique hotels; mixologists create an interesting selection of seasonal cocktails.

The Depot

Tideway Yard, 125 Mortlake
High Street, Barnes SW14 8SN

020 8878 9462

depotrestaurant.co.uk

Perched above the riverbank with a panoramic view of the Thames, The Depot serves up hearty cooking with special neighbourhood vibe.

Gaicho

The Towpath, Richmond
Riverside, Richmond TW10 6UJ

020 8948 4030

gaichorestaurants.co.uk

Perched above the riverbank seriously chic Argentine establishment with a renowned alfresco terrace and fashionable clientele. Meat lovers travel miles for the sensational steaks.

The Glasshouse

14 Station Parade,
Kew TW9 3PZ

020 89406777

glasshouserestaurant.co.uk

High quality dining experience in comfortable and relaxed surroundings from the partnership behind Chez Bruce in Wandsworth and La Trompette in Chiswick.



The Lofty Turtle

505-507 Upper Richmond Road
West, East Sheen, SW14 7DE

020 8878 1995
loftyturtle.com

American inspired classics served
in a New York style lounge bar
and restaurant.

Petersham Nurseries Café

Church Lane, (off Petersham
Road), Richmond, TW10 7AG

020 8605 3627
petershamnurseries.com

Pilgrimage-worthy dining for
every serious lover of great food,
served in a heated, plant-filled
Victorian greenhouse with an
earth floor.

Seasalt Mediterranean Kitchen & Bar

5 White Hart Lane,
Barnes SW13 OPX

020 8392 1111
seasaltgourmet.co.uk

Mediterranean cuisine with
a subtle nod towards the
owners' homeland of Turkey.

Sonny's

94 Church Rd, Barnes
SW13 ODQ

020 87480393
sonnys.co.uk

Long-established neighbourhood
spot, which successfully
combines its role as deli,
café and restaurant.

The Treehouse

73 White Hart Lane,
Barnes SW13 OPW

020 8392 1617
treehousepeople.com

Excellent food in a stimulating
environment, surrounded by
contemporary and ethnic art
and furniture.

Wallace & Co Restaurant

146 Upper Richmond Road,
Putney SW15 2SW

020 8780 0052
wallaceandco.com

Specialising in local, seasonal
fruit and vegetables, Masterchef
judge Gregg Wallace's café
restaurant is renowned for its
down-to-earth atmosphere and
extensive wine list.

Yia-Mas

40 Upper Richmond Rd,
Putney SW15 2RX

020 8871 4671
yiamas.co.uk

Top quality Greek Cypriot food
in a warm, friendly atmosphere.



PUBS

The Brown Dog

28 Cross St, Barnes SW13 0AP

020 8392 2200

thebrowndog.co.uk

Pretty Victorian pub with a genuine neighbourhood feel; snug bar, intimate dining room and a look that combines the traditional with the modern.

The Fox

167 Upper Richmond Rd, Putney, SW15 6SE

020 8788 1912

A large, bustling pub that offers live music.

Fox and Grapes

9 Camp Rd, Wimbledon SW19 4UN

020 8619 1300

foxandgrapeswimbledon.co.uk

French owned but serving 'proper' pub food, from Cumberland sausages and prawn cocktail to wild boar scotch egg.

The Half Moon

93 Lower Richmond Rd, Putney, SW15 1EU

020 8780 9383

halfmoon.co.uk

Great traditional British pub that doubles as one of London's longest running, and most respected live music venues.

Hare & Hounds

216 Upper Richmond Rd West, East Sheen, SW14 8AH

020 8876 4304

theharesheen.com

This friendly pub has an amazing garden and a fabulously fresh menu. Their Sunday Jazz sessions are particularly noteworthy.

The Idle Hour

62 Railway Side, Barnes, SW13 0PQ

020 8878 5555

theidlehour.co.uk

Often described as London's best secret pub and the winner of many awards and accolades, The Idle Hour is a small, but perfectly formed gastropub hidden away on a tiny path in Barnes.

Prince of Wales

138 Upper Richmond Rd, Putney SW15 2SP

020 8788 1552

princeofwalesputney.co.uk

A warm Victorian pub: eat in the busy bar or in lavishly decorated baronial style dining room. Seasonality to the fore, with game a speciality.

The Telegraph

Putney Heath, Putney SW15 3TU

020 8788 2011

thetelegraphputney.co.uk

A delightful country pub just opposite Roehampton Cricket Club, with a good selection of meals and a large wine selection from around the world.

The Victoria

10 West Temple, East Sheen SW14 7RT

020 88764238

thevictoria.net

Beautifully restored pub, where you can eat in the relaxed bar or more formal conservatory overlooking the terrace.

Youngs Pub

11 High Street, Roehampton, SW15 4HL

020 8788 1997

A large traditional pub with a warm welcome. Currently under re-development in association with St James.



CAFÉS

Café Mumba

683 Fulham Road, Fulham,
London SW6 5PZ

020 7751 0380

Continental-style caffè, friendly and informal, with an all-day menu.

Giuliano

58 Church Road,
Barnes SW13 0DQ

020 8563 8223

Part café, part deli, part restaurant, you'll find excellent paninis and "perhaps one of the finest Italian coffee offerings in the city.

Grind Coffee Bar

79 Lower Richmond Road,
Putney SW15 1ET

020 8789 5101

grindcoffeebar.co.uk

Coffee for the true connoisseur... freshly ground by true obsessives, the great coffee is only matched by the fresh treats from the Antipodean-style bake house.

Le Pain Quotidien

4- 5 High Street,
Wimbledon Village SW19 5DX

020 7486 6154

lepainquotidien.co.uk

Fresh bread, delectable pastries a well-stocked pantry and a welcoming communal table make this the perfect spot to indulge in.

Orange Pekoe

3 White Hart Lane,
Barnes SW13 OPX

020 8876 6070

orangepekoteas.com

The winner of Time Out's award for 'Best Tea Room' in 2008, this beautifully designed little café is worth visiting for wonderfully indulgent cream teas, or a leisurely weekend brunch.

Pavilion Café

Roehampton Gate,
Richmond Park SW15 5JR

020 88767933 royalparks.org.uk/parks/richmond_park

Serves a range of snacks, drinks and ice creams, indoor and outdoor seating.

The Windmill Tearooms

Windmill Road,
Wimbledon Common SW19

020 8788 2910

windmilltearooms.com

Choose from homemade cakes, freshly prepared lunches or all-day breakfasts in this quirky café.



THE LONDON EYE WATERLOO

LIVING IN SW15, YOU ARE JUST MINUTES AWAY FROM EVERYTHING. ENJOY ALL THE CAPITAL HAS TO OFFER, WITH THE WEST END A MERE 30 MINUTES AWAY BY PUBLIC TRANSPORT.

St James has provided a residents' commuter service, which operates from the development to Putney mainline and East Putney tube stations. The coach runs every weekday (excluding Bank Holidays) in both morning and evening rush hours.



10



THE CITY LONDON / UNDERGROUND EAST PUTNEY

TAXI

Addison Lee

Bookings and enquiries:

0844 800 6677

London's popular pre-order taxi company, operating 24/7 with business and VIP services.

The Keen Group

75-77 Lydden Grove,
Wandsworth, SW18 4LY

020 7228 5555

Operate a 24 hour, seven days a week, 52 weeks of the year service.

Alpha Skyways Limited

2a Keswick Broadway,
Upper Richmond Road,
Putney SW15 2RB

020 8874 0090

Trusted citywide minicab and courier service.

Mr Buttercup's Carriage Company

118 Upper Richmond
Road, Putney SW15 2SP

020 8780 1965

mrbuttercupscarriageco.co.uk

Small friendly private-hire company offering competitive pricing and a personal and flexible service.


Roehampton Cars Ltd

17 Roehampton High
Street, Putney, SW15 4HL

020 8780 9000

roehamptoncars.co.uk

24/7 mini cab and courier service including airport taxis, school runs and business accounts

 - St James offers a weekday commuter service for residents of Queen Mary's Place. Monday to Friday a commuter coach service will run during the morning and evening rush hours, between the Marketing Suite, Putney main line and East Putney tube station.

Private Residents' Commuter Service

020 8246 6748

TRAIN

Nearby Putney rail station offers mainline links to Waterloo and connections via South West Trains.

PUTNEY

CLAPHAM JUNCTION
6 mins

WATERLOO
17 mins

THE CITY (BANK) 
30 mins

KING'S CROSS
ST. PANCRAS 
36 mins

CANARY WHARF 
38 mins

UNDERGROUND

East Putney station provides access to the District line, joining West London to East.

EAST PUTNEY

HIGH STREET KENSINGTON
16 mins

SLOANE SQUARE
19 mins

VICTORIA
22 mins

EMBANKMENT
27 mins

BOND STREET
31 mins



BUS

72

Operates every eight minutes to Hammersmith Broadway from South Thames College/ Roehampton Stop S.

85

Operates every eight minutes to Putney Station, from Medfield Street Stop F.

493

Operates every twelve minutes from Richmond to Tooting via East Sheen & Roehampton.

430

Operates every twelve minutes Roehampton to South Kensington via Putney & Fulham.

170

Operates every eight minutes Roehampton to Victoria via Putney, Clapham & Battersea

BIKE

Thames Valley cycle route

is on your doorstep and as the Barclays Cycle Hire Scheme extends from central London, residents will in the future be able to utilise this scheme.





RICHMOND SHOPPING RICHMOND

WITH BARNES, PUTNEY, WIMBLEDON AND RICHMOND ON THE DOORSTEP AND THE WESTFIELD CENTRE SO CLOSE TO HAND, YOU HAVE EASY ACCESS TO EVERY TYPE OF SHOP YOU COULD EVER NEED.

From delicatessens to designer labels, and from chic boutiques to well-stocked supermarkets, SW15 and its surrounding area are a shopping nirvana.

Barnes Village
barnesvillage.com

Quaint and villagey, Barnes hosts some fabulous and quirky little independent stores along the High Street and White Hart Lane. Don't miss Marilyn Moore, Question Air or Tobias & the Angel. Plus there are a fantastic selection of delicatessens and specialist shops.

The Broadway
wimbledontowncentre.co.uk

Wimbledon's main high street offers a diverse range of shops to cater to all your needs.

Centre Court Shopping

Queen's Road,
Wimbledon, SW19 8YA

020 8944 8323
centrecourtshopping.co.uk

Boasts two floors of predominantly mid-range high street stores, such as Debenhams, Gap, Boots and Marks & Spencer.

Kew Retail Park

Mortlake Road, Kew, TW9 4AD

Hop over Kew Bridge for an American-style shopping experience. Park for free and enjoy shops such as Mothercare, Gap, Marks & Spencer, Next and Boots.

Putney Exchange Shopping Centre

Putney High Street,
Putney SW15 1TW

020 8780 1056
theexchangesw15.com

Houses a wide array of high street stores and independent boutiques (think Phase Eight, JoJo Maman Bebe and Huttons) along with cafés and hairdressers.

Richmond-upon-Thames
visitrichmond.co.uk

Sophisticated high street with cobbled streets leading off, and more exclusive boutiques extending up Richmond Hill. Matches, Max Mara and Brissi are big favourites.

Westfield London
Ariel Way, London, W12 7GF

020 3371 2300
westfield.com/london

Not just for luxury lovers, (although it's the only place outside the West End where you'll find Dior, DeBeers, Prada and Gucci in one place), Westfield also boasts more up-market high street stores, such as Jaeger, Hobbs and Russell & Bromley.

Wimbledon Village

The Village has some wonderful bars, restaurants, cafés and boutiques, as well as a grocery store, bank, post office, florists, bakers and delicatessen – all within a unique and picturesque setting.



FOOD SHOPPING

Waitrose

292 Upper Richmond Road West,
East Sheen SW14 7JG

020 8878 4792
waitrose.com

Open 8am-8pm daily, except
Sunday 10am-4pm. Will deliver
to Roehampton.

Sainsbury's Local

225 - 231 Upper Richmond Road,
Putney SW15 6SJ

020 8276 140
sainsburys.co.uk

Open 7am-11pm daily.

Sainsbury's

2-6 Werter Road,
Putney SW15 2LJ

020 8789 6286
sainsburys.co.uk

Open 7am-9pm daily, except
Sunday 11am-5pm. Will deliver
to Roehampton.

Marks & Spencer

Kew Retail Park,
Mortlake Road, Kew TW9 4AD

020 8876 6864

Barnes Fish Shop

18 Barnes High St,
Barnes SW13 9LW

020 8876 1297

Fresh fish - and all sorts of fishy
extras - plus advice on cooking
and the all-important gutting,
filleting and scaling done for you.

Cook

50 Barnes High Street,
Barnes SW13 9LN

020 8392 2060
cookfood.net

Up-market frozen meals 'home-
cooked' by professional chefs -
a real boon for busy families.

Gusto & Relish

56 White Hart Lane,
Barnes SW13 0PZ

020 8878 2005

A glorious delicatessen, where
the owners' home-cooked food
is sold alongside products of
excellent provenance from
small producers.



The Parish Bakery

13 Barnes High Street,
Barnes SW13 9LW

020 8876 9441

This busy little shop has a steady flow of customers buying bread or ciabatta, all baked at their East Sheen branch and brought over fresh each day.

The Real Cheese Shop

62 Barnes High Street,
Barnes SW13 9LF

020 8878 6676

A huge range of cheeses from England, the Nordic countries, and France.



SURROUNDED BY LUSH PARKLAND AND WITH EASY ACCESS TO THE RIVER THAMES, THERE IS NO SHORTAGE OF THINGS TO DO TO KEEP YOU ENTERTAINED. WITH THE THRIVING COMMUNITIES OF PUTNEY, BARNES AND RICHMOND CLOSE TO HAND, A WIDE RANGE OF ENTERTAINMENT AND LEISURE OPTIONS ARE OPEN TO ROEHAMPTON RESIDENTS.

CINEMA & THEATRE

Putney Arts Theatre

Ravenna Road,
Putney, SW15 6AW

020 8788 6943

putneyartstheatre.org.uk

Highly recommended for the wide range of plays, readings, revues and musicals it puts on throughout the year. Its main stage is the envy of most professional fringe venues.

Odeon, Putney

26 Putney High Street,
Putney, SW15 1SN

0871 22 44 007

odeon.co.uk

Watch all the latest blockbusters in modern comfort.

Richmond Theatre

Kew Green, Richmond-upon-Thames TW9 1QJ

020 8939 9277 atgtickets.com/venue/Richmond-Theatre

Everything from serious plays to pantomime set within a beautiful 19th century building, just off Richmond Green.

The Olympic Cinema

117-123 Church Road,
Barnes SW13 9HL

olympiccinema.co.uk

Boutique in style, with an emphasis on comfort, the Olympic Cinema will screen a comprehensive range of quality mainstream and art house films on general release. Due to open Spring 2012.

PARKS & GARDENS

Kew Botanic Gardens

Kew Green, Kew, TW9 3AB

020 8332 5565

kew.org

Explore glasshouses, landscapes and 250 years of history at the world's most famous garden. Climb into the treetops, delve into rainforest or discover more on a guided tour.

Richmond Park

royalparks.gov.uk/Richmond-Park.aspx

The largest Royal Park in London is home to 650 free-roaming deer. Hills, woodland, ponds, gardens, grasslands and ancient woodlands provide the perfect setting for a fantastic family day out.

London Wetland Centre

Queen Elizabeth Walk,
Barnes, SW13 9WT

020 8409 4400

wwt.org.uk

London Wetland Centre is one of the most important conservation projects of the past century. Its broad range of habitats bring a huge variety of water birds, amphibians and small mammals to the heart of the Capital, giving millions of people the opportunity to encounter wildlife up close.

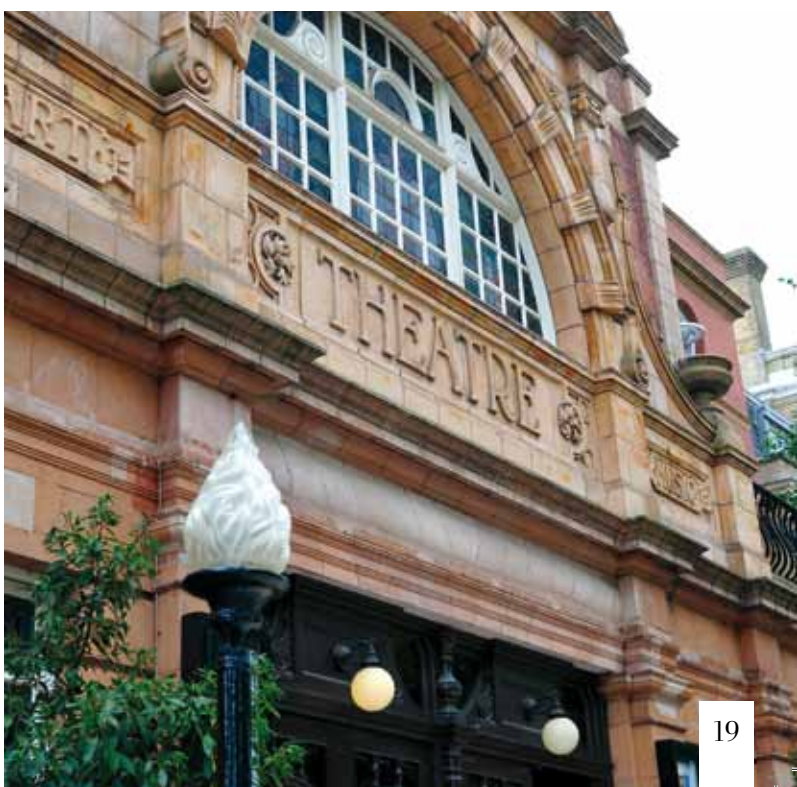
Wimbledon & Putney Commons

Manor Cottage, Windmill Rd,
Wimbledon SW19 5NR

020 8788 7655

wpcc.org.uk

The site includes 10 full size football pitches and outstanding rugby facilities as well as nature trails, ponds, a windmill and museum.



ENTERTAINMENT AND LEISURE

SPORTS & LEISURE

Bank of England Sports Centre

Bank Lane, off Priory Lane,
Putney SW15 5JQ

020 8876 8417
bankofenglandsportscentre.co.uk

Superb facilities for every traditional sport set within lavish surroundings. 20m indoor swimming pool.

Barnes Sports Club

The Club House, Lonsdale Road,
Barnes SW13 9QL

020 8748 6220
barnessportsclub.org

Offering hockey, tennis, cricket and squash, Barnes Sports Club also has a friendly and newly refurbished clubhouse where members and friends meet socially.

Barnes Rugby Club

Queen Elizabeth Walk, Barnes
SW13 0DG

barnesrfc.org

Running six teams including a Veterans XV and a Ladies XV and with a thriving and exciting minis section, Barnes is a totally inclusive, fun loving and successful local rugby club.

Eddie Catz Playcentre

68-70 Putney High St, Putney
SW15 1SF

0845 201 1268
eddiecatz.com

Offering a variety of activities, events and classes. Open for parents with children aged up to 10 years old.

London Rowing Club

Embankment,
Putney SW15 1LB

020 8788 0666
londonrc.org.uk

One of the oldest and most successful clubs in Britain, it offers competitive and social rowing for men and women.

Putney Lawn Tennis Club

Balmuir Gardens,
Putney SW15 6NG

020 8788 4344

The club's 10 courts are available for play seven days a week throughout the year. Coaching is available.

Putney Town Rowing Club

Kew Meadow Towpath, Richmond
TW9 4EN

020 8878 8236
putneytownrc.co.uk

Popular club for rowers of all capabilities, with a lively social scene.

Roehampton Golf Club

Roehampton Lane,
Putney SW15 5LR

020 8876 3858
roehamptonclub.co.uk

18-Hole Course Par 71 with practise area and tuition amongst other excellent facilities.

Roehampton Club

Roehampton Lane,
Putney SW15 5LR

020 8480 4200
roehamptonclub.co.uk

Club with a unique mix of sports, health, beauty and hospitality; hosts the closest swimming pool to Roehampton House.

Santé

Roehampton Lane,
Putney SW15 5BF

Residents only gym open seven days a week. Features state-of-the-art cardiovascular and resistance equipment from Life Fitness.

South Bank Sailing

The Tow Path/Embankment,
Putney SW15 1LB

020 8788 9786
southbanksailingclub.co.uk

Competitive and social sailing plus organised sailing trips and holidays.

Stag Lodge Stables

Robin Hood Gate,
Richmond Park SW15 3RS

020 8974 6066
ridinginlondon.com

British Horse Society approved family-run riding stables located on the edge of Richmond Park.

Virgin Active Health Clubs

Wellington House,
154-160 Upper Richmond Rd,
Putney SW15 2SW

020 8246 6676
virginactive.co.uk

State-of-the-art cardiovascular equipment, toning circuits, free weights, swimming pools, indoor cycling studios, aerobic studios, and junior care facilities.

Wimbledon Racquets & Fitness Club

Cranbrook Rd,
Wimbledon SW19 4HD

020 8947 5806
wimbledonclub.co.uk

Play squash or badminton, either socially or competitively. There is also a gym and members' bar.



ENTERTAINMENT AND LEISURE

WHEN IT COMES TO THE EDUCATION OF YOUR CHILDREN YOU WANT TO KNOW THAT THEY ARE WELL PROVIDED FOR. THANKFULLY THERE'S A SELECTION OF SCHOOLS AND FURTHER EDUCATION OPTIONS.

PRIMARY

AGE 4-11

Roehampton Church School

245 Roehampton Lane,
Putney, SW15 4AA

020 8788 8650

roehampton.wandsworth.sch.uk

Sacred Heart Catholic School

Roehampton Lane,
Putney, SW15 5NX

020 8876 7074

Heathmere Primary School

Alton Road, Putney, SW15 4LJ

020 8788 9057

heathmere.wandsworth.sch.uk

Hotham Primary School

Charlwood Road,
Putney SW15 1PN

020 8788 6468 webfronter.com/wandsworth/hotham

Our Lady of Victories Primary School

1 Clarendon Drive,
Putney SW15 1AW

020 8788 7957

ourladyofvictories.wandsworth.sch.uk

The Alton School

Danebury Avenue,
Roehampton SW15 4PD

020 8876 8482

Granard Primary School

Cortis Road, Putney SW15 6XA

020 8788 3606

granardprimary.co.uk

SECONDARY

AGE 11-18

Elliott Secondary School

Pullman Gdns, Putney, SW15 3DG

020 8788 3421

elliott-school.org.uk

John Paul II School

Princes Way,
Wimbledon SW19 6QE

020 8788 8142

johnpaulii.wandsworth.sch.uk

HIGHER EDUCATION

AGE 18+

Roehampton University

Roehampton Lane,
Putney, SW15 5PJ

020 8392 3000

roehampton.ac.uk

PRIVATE / INDEPENDENT

AGE 4-11

Hall School Wimbledon

Stroud Crescent,
Putney Vale SW15 3EQ

020 8394 6144

hsw.co.uk

AGE 4-11

Hurlingham School

122 Putney Bridge Road,
Putney SW15 2NQ

020 8874 7186

hurlinghamschool.co.uk

**AGE 3-18****Ibstock Place School**

Clarence Lane,
Roehampton SW15 5PY

020 8876 9991

ibstockplaceschool.co.uk

AGE 3-11**Prospect House**

75 Putney Hill,
London SW15 3NT

020 8780 0456

prospecths.org.uk

AGE 4-18 GIRLS**Putney High**

35 Putney Hill,
Putney SW15 6BH

020 8788 4886

putneyhigh.gdst.net

AGE 4-8 BOYS, 4-16 GIRLS**Putney Park School**

11 Woodborough Rd, Putney
SW15 6PY

020 8788 8316

putneyparkschool.co.uk

AGE 13-18 BOYS**St Paul's School**

Lonsdale Road,
Barnes SW13 9JT

AGE 3-18**Swedish School**

82 Lonsdale Road,
Barnes SW13 9JS

020 8741 1751

swedishschool.org.uk

**NURSERY/
CRECHE****The Beehive**

St Margaret's Church Hall,
Putney Park Lane,
Putney SW15 5HU

020 8780 5333

beehive.buzzbuzz.org

Lion House School

The Old Methodist Hall,
Gwendolen Avenue,
Putney SW15 6EH

020 8780 9446

lionhouseschool.co.uk

Eastwood Nursery School

166-168 Roehampton Lane,
Roehampton SW15 4EU

020 8876 3976 eastwood.

wandsworth.sch.uk

Puddle-Ducks Nursery

95 Lacy Road,
Putney SW15 1NR

020 8789 4500

puddle-ducks.org.uk



WITH A CHOICE OF MEDICAL FACILITIES AVAILABLE, THERE'S NO NEED TO BE CONCERNED IF YOU REQUIRE HEALTHCARE WHILE LIVING IN ROEHAMPTON.

PHARMACIES

Co-op Pharmacy

3 Danebury Avenue London
SW15 4DG

020 8788 3150

Boots

109 Putney High Street, London

020 8788 4345

DOCTORS

The Roehampton Surgery

191 Roehampton Lane,
Putney SW15 4HN

020 8788 1188

Mayfield Surgery

246 Roehampton Lane,
Putney SW15 4AA

020 87805770

Dr PJ Ilves & partners

351 Danebury Avenue
Roehampton London
SW15 4DU

0844 4773782

Dr A Alissa

208-210 Roehampton Lane,
Putney, SW15 4LE

020 8788 4844

The Ashburton Medical Practice

105 Carslake Road Putney
London SW15 3DD

020 8785 6440



HOSPITALS

Queen Mary's Hospital
Roehampton Lane,
Roehampton, SW15 5PN
020 8487 6000

**Queen Mary's Hospital
Minor Injuries Unit**
Roehampton Lane,
Roehampton, SW15 5PN
020 8487 6999

Kingston Hospital A&E
Galsworthy Road,
Kingston upon Thames,
KT2 7QB
020 8546 7711

DENTISTS

Maple Dental Centre
238 Roehampton Lane,
Putney, SW15 4LE
020 8788 3133
maple-dental.co.uk

Putney Dentists
2A Dealtry Road,
Putney SW15 6NL
020 8785 6772
putneydentists.co.uk



St James
Designed for life